

KDEN/DEN  
Apt Elev 5434'  
N39 51.7 W104 40.4

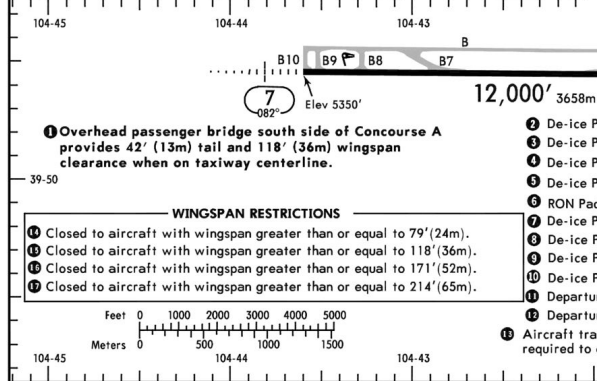
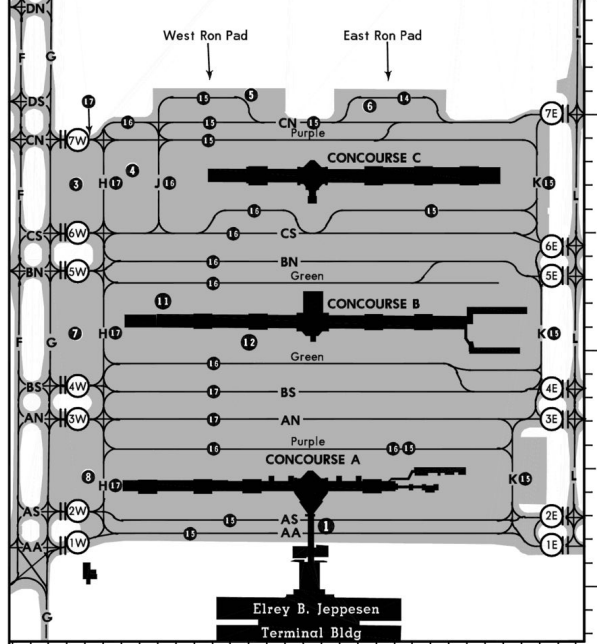


JEPPESSEN  
30 AUG 24 10-9 Eff 5 Sep

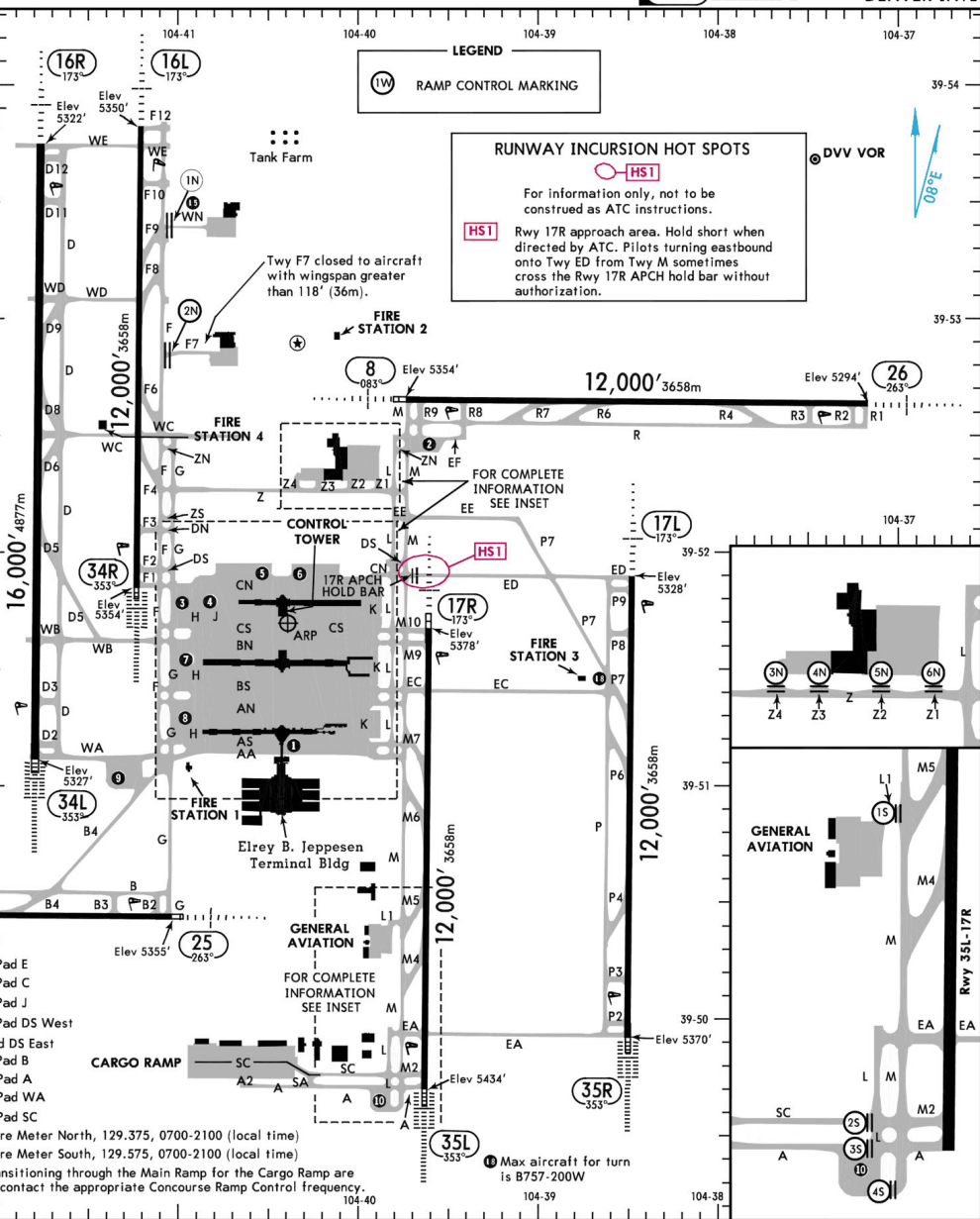
DENVER, COLO  
DENVER INTL

D-ATIS Departure 134.025 VOT 110.0 (Limited)	Data Comm ACARS: D-ATIS PDC, TWIP	CPDLC: DCL	DENVER Clearance Tower 118.75	Ground West 121.35	East 121.85
Rwys 8/26, 17L/35R 132.35	Rwy 7/25 128.75	North 127.05	South 128.45	East 128.25	West 126.1

RAMP CONTROL					
Contact the Ramp Control frequency associated with the parking location, regardless of the ramp entry points used.					
CONCOURSE A (North Side) 129.05	CONCOURSE A (South Side) 131.975	CONCOURSE B (North Side) 130.95	CONCOURSE B (South Side) 130.6	CONCOURSE C (North Side) 119.475	CONCOURSE C (South Side) 131.3
					CARGO RAMP 131.975



CHANGES: Ground frequency sectorization.



LEGEND  
(IW) RAMP CONTROL MARKING

**RUNWAY INCURSION HOT SPOTS**  
For information only, not to be construed as ATC instructions.  
HS1 Rwy 17R approach area. Hold short when directed by ATC. Pilots turning eastbound onto Twy ED from Twy M sometimes cross the Rwy 17R APCH hold bar without authorization.

1 Overhead passenger bridge south side of Concourse A provides 42' (13m) tail and 118' (36m) wingspan clearance when on taxiway centerline.

- WINGSPAN RESTRICTIONS**
- 1 Closed to aircraft with wingspan greater than or equal to 79' (24m).
  - 2 Closed to aircraft with wingspan greater than or equal to 118' (36m).
  - 3 Closed to aircraft with wingspan greater than or equal to 171' (52m).
  - 4 Closed to aircraft with wingspan greater than or equal to 214' (65m).

- 2 De-ice Pad E
- 3 De-ice Pad C
- 4 De-ice Pad J
- 5 De-ice Pad DS West
- 6 RON Pad DS East
- 7 De-ice Pad B
- 8 De-ice Pad A
- 9 De-ice Pad WA
- 10 De-ice Pad SC
- 11 Departure Meter North, 129.375, 0700-2100 (local time)
- 12 Departure Meter South, 129.575, 0700-2100 (local time)

13 Aircraft transitioning through the Main Ramp for the Cargo Ramp are required to contact the appropriate Concourse Ramp Control frequency.

